

Juan Seguin Elementary School
2026 - 2027 Back to School FAQ



1. What is the student dress code policy at JSES?

JSES implements the Fort Bend ISD student dress code. The FBISD dress code information can be found in the student/parent handbook and student code of conduct located on the district website. <https://www.fortbendisd.com/studentcodeofconduct>

Each Friday is JSES Spirit Day. Staff and students are highly encouraged to wear their school spirit shirt with jeans.

2. What are the school hours?

Morning announcements and procedures begin immediately at 7:50am. Classroom instruction starts at 8:05am. **Any student arriving after 8:05am is marked tardy.**

Doors open and student drop off begins at 7:30am. Juan Seguin Elementary School is not responsible for students left unattended prior to 7:30am.

School ends at 3:25pm.

Afternoon dismissal begins at 3:25pm and our front office closes each day at 4:00pm.

3. When is the first day of school?

The first day of school is on Tuesday, August 11, 2026.

You can visit our district website to access the FBISD Instructional Calendar.

<https://www.fortbendisd.com/cms/lib/TX01917858/Centricity/Domain/4/2026%2027%20Instructional%20Calendar%20English.pdf>

4. What school supplies do I need to buy?

You can view our JSES school supply list on our [school website](#). Please bring all school supplies with you to our Meet the Teacher event on Friday, August 7, 2026 at 4pm. We ask that you please have all items labeled with your child's name prior to the event.

5. When is Meet the Teacher?

Meet The Teacher will be held on Friday, August 7, 2026 at 4:00pm. Your children's Homeroom Teachers will be making calls to introduce themselves to you prior to the event.

6. Will there be an Extended Learning Day program this school year?

Yes. [Click here](#) to visit the FBISD website regarding the most updated information and how-to guide to submit a school-year registration contract. Scroll down to the 26-27 School Year registration. Once you have created an account, fill out the application and submit. Contracts will show as pending until they have been accepted. This approval process can take up to three weeks during this high-volume time. You will receive two emails: a confirmation once application is *submitted*, and a confirmation when your application is *approved* by staff.

7. What do I need to do if I want to register my child at Juan Seguin Elementary?

Students who are new to FBISD, returning to FBISD from another district, or seeking a student transfer must complete the online application. [Click here](#) to access more information on the required steps to complete the application as per district policy. All parents, both new and returning, will need to complete the Skyward Online Student Verification form in August 2026. Student transfer applications do not guarantee a spot. **The window to submit a student transfer application will close on July 23, 2026.**

8. What if I already applied for a student transfer, but I have not heard from anyone yet? How do I know if my child was accepted or not?

You may contact FBISD Student Affairs department at (281) 327-2829 or email student.affairs@fortbendisd.gov

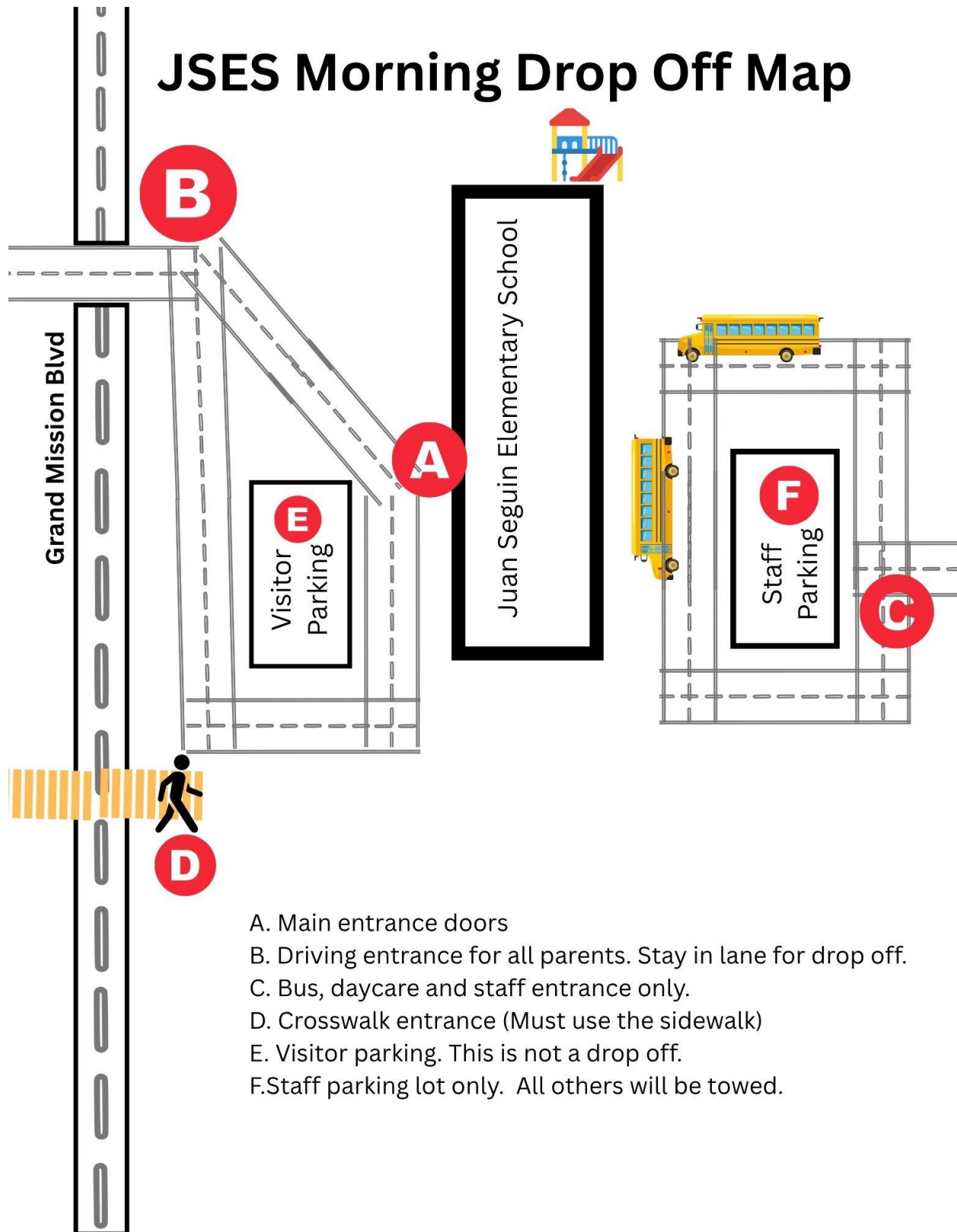
9. We live in the new zone to Barbara Jordan Elementary, and I want my child to stay at Juan Seguin Elementary School for the upcoming school year. What do I do?

Student transfer applications do not guarantee a spot. **The window to submit a student transfer application will close on July 23, 2026.** You must submit an application for each student. [Click here](#) to access more information on the required steps to complete the application as per district policy.

10. What is the school drop off procedure in the morning?

Students who are 'car riders' in the morning should be dropped off using the front of the school entrance off Grand Mission Blvd. Please do not park. Please remain in your vehicle and use the drop off lane. Please refer to the map below.

JSES Morning Drop Off Map



- A. Main entrance doors
- B. Driving entrance for all parents. Stay in lane for drop off.
- C. Bus, daycare and staff entrance only.
- D. Crosswalk entrance (Must use the sidewalk)
- E. Visitor parking. This is not a drop off.
- F. Staff parking lot only. All others will be towed.

11. What is the school pick up procedure in the afternoon?

All car riders must have a new 26-27 car rider tag. If you do not, you will have to park, come inside and wait in the lobby to pick up your child from the main office.

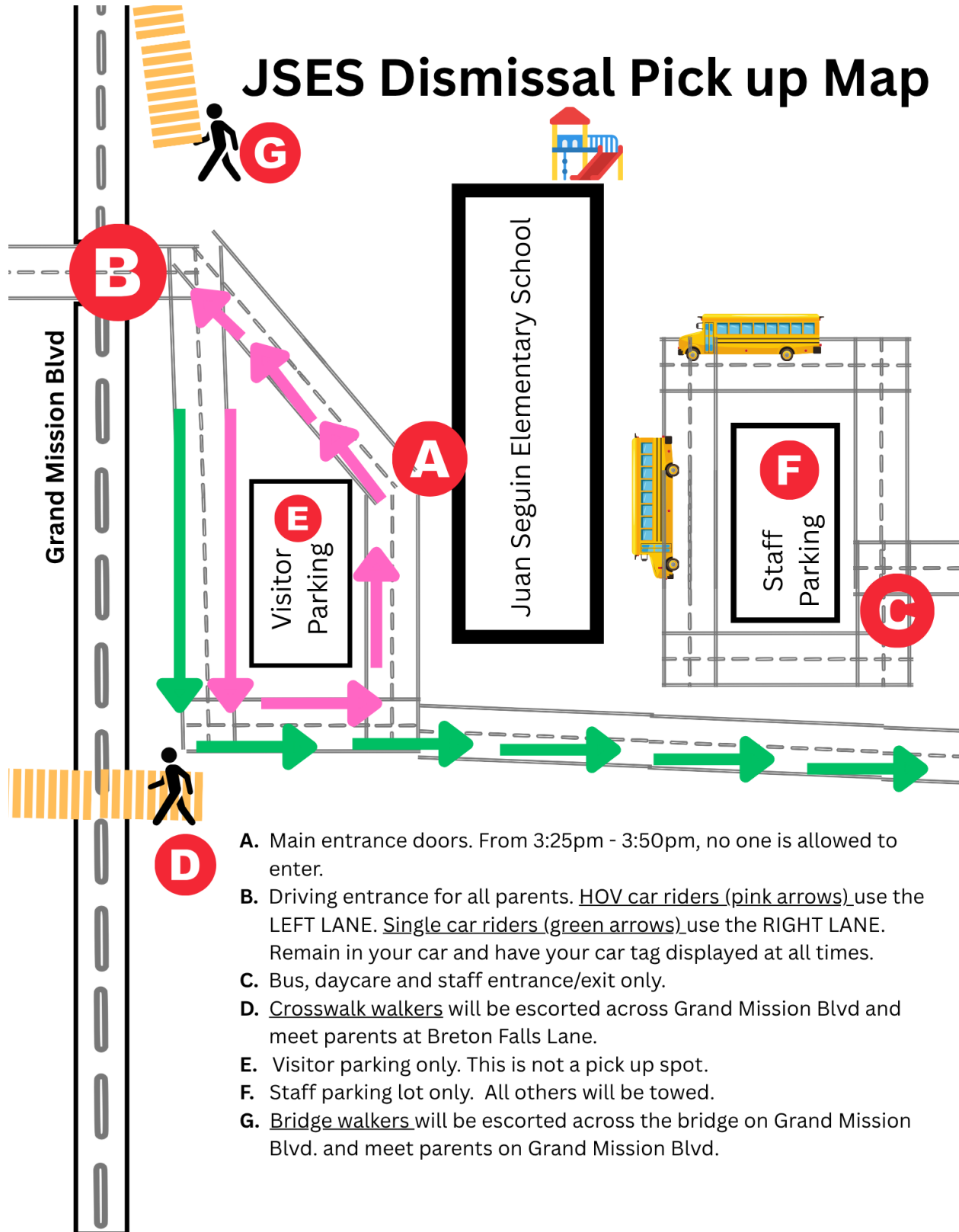
New 2026 - 2027 Car Tags may be picked up on Wednesday, August 5, 2026 anytime from 3pm – 5pm.

HOV Car riders: If your child is an HOV car rider (You are picking up 2 or more children), you will use the front entrance but must stay in the LEFT LANE once the line starts moving. Please make sure your car tag is visibly displayed at all times and remain in your vehicle as you proceed to pick up your child.

Single Car riders: If your child is a single car rider (You are only picking up only 1 child), you will use the front entrance but must stay in the RIGHT LANE once the line starts moving. Please make sure your car tag is visibly displayed at all times and remain in your vehicle as you proceed to pick up your child.

Extended Learning: If your child will participate in the Extended Learning Program (after school program), please first confirm your child(ren) is registered. You will use the back bus entrance off Harlem to pick up after 4pm. Please refer to the *pick up map located on the next page*.

JSES Dismissal Pick up Map



- A. Main entrance doors. From 3:25pm - 3:50pm, no one is allowed to enter.
- B. Driving entrance for all parents. HOV car riders (pink arrows) use the LEFT LANE. Single car riders (green arrows) use the RIGHT LANE. Remain in your car and have your car tag displayed at all times.
- C. Bus, daycare and staff entrance/exit only.
- D. Crosswalk walkers will be escorted across Grand Mission Blvd and meet parents at Breton Falls Lane.
- E. Visitor parking only. This is not a pick up spot.
- F. Staff parking lot only. All others will be towed.
- G. Bridge walkers will be escorted across the bridge on Grand Mission Blvd. and meet parents on Grand Mission Blvd.

12. My child is riding the FBISD school bus, how will I know which bus and what time they will pick up/drop off my child?

You can find information regarding FBISD transportation at <https://www.fortbendisd.com/Domain/68> or you can call the Hodges Bend Transportation Center at 281-634-1970.

13. Will I be able to eat with my child during his/her lunch time?

Beginning on Friday, September 4, 2026 parents are welcome to have lunch with their child on Fridays only, or on the day of the child's birthday.

Designated weekday: Fridays only (starting September 4, 2026)

Time: Your child's lunch time (the scheduled time must be obtained from the teacher)

Parent/guardian visitor expectations:

- Parents/guardians must bring their own lunch to eat or have the option to purchase lunch from the FBISD nutrition services in the JSES cafeteria.
- Parents/guardians may bring their child lunch from an outside vendor, or the child may eat his/her lunch provided by FBISD nutrition services in the JSES cafeteria.
- Parents/guardians can only have lunch with their child. It is not permitted to invite other students to join you regardless of relation to the other child.
- Parents/guardians and their child must sit in the designated area marked "Parent Lunch Table."
- 5 minutes prior to the end of the child's lunchtime, parents/guardians will be asked to exit, so the child may rejoin his/her class and finish the school day's instruction.
- For safety reasons, children who do not attend JSES are not allowed to attend.

14. Can I drop off lunch for my child during school?

You can drop off lunch for your child for special occasions. We ask that you please label it with your child's name, grade, and homeroom teacher's name. We will not interrupt instruction and drop food off in the classroom. The food will be placed on the "lunch pick up shelf" in the cafeteria. It will be the child's responsibility to pick it up once they pass the area to line up for lunch.

15. How do I pay for my child's breakfast or lunch?

[Click here](#) to access the school cafe website and create an account to access school menus, pay for breakfast or lunch, and submit applications. For more information and to access our FBISD Child Nutrition Department, please visit :

<https://www.fortbendisd.com/Page/334>

16. If I need to pick up my child early for a doctor's appointment or an emergency, how early can I pick him/ her up?

JSES is a large elementary school campus. To maintain safety and maximize on instruction for the day from beginning to end, we do not permit early student pickups after 2:30pm.

17. How do I login to check my child's grades?

Once the school year starts, student grades will be updated weekly. Parents/guardians can login to Skyward to view student grades. [Click here to view more information on how to access Skyward.](#)

18. How do I stay informed with announcements and important information from both JSES and FBISD?

FBISD uses Finalsite as the mass communication system between parents and staff. Please ensure your contact information (email address and phone number) is correctly entered upon student registration/verification in Skyward. If you need to make updates, you can login to Skyward Family Access or call 281-634-9850. A weekly Stallion Newsletter from the principal is sent to the email address you have set as the primary in Skyward. [Click here to view](#) more information on how to access Skyward. If you would like more than one parent to receive the school communication, then you will need to set up an additional skyward account via family access.

19. Where do I turn in my child's updated immunization records?

Each school year, we ask parents/guardians to please communicate with our school nurse, Nurse Agnes Mawa, to submit a copy of the most updated immunization records as applicable. You can email her at agnes.mawa@fortbendisd.gov You can also view more information regarding school health services on our [FBISD School Health services website.](#)

20. How do I sign up my child for after school clubs?

JSES offers a variety of both before school and after school clubs. Some examples include: UIL Academic Teams, Art Club, Treble Makers Music Club, Student Council, Coding Club, Broadcast Team, Safety Patrol, and more. More information about how your child can sign up is forthcoming.

If you still have questions, please call us at 281-634-9850, and we will be happy to help. You can also visit our school website at www.fortbendisd.com/jses